

Invest in Hope for Tomorrow

The cost of the overall building project is approximately \$7.4 million. As of May 2021, we have received pledges for the campaign in the amount of \$4.2 million. We have already collected over \$3.1 million. Praise God!

With such a project, every gift matters. Through the generous prayerful, volunteer, and financial support of many – and the extraordinary support of a few – we believe that we can rise to this unique opportunity in Hope’s history and meet this challenge.



TIMELINE FOR CONSTRUCTION

Demo old buildings and prepare the site	June - September 2021
Build out the infrastructure	September 2021 - February 2022
Completion of building interior	January - June 2022
Move in and Grand Opening	June - July 2022



2021 – 2022 Hope for Tomorrow Pledge Card

With gratitude for God’s abundant grace:

Weekly gift from _____ - December 21, 2022 for our Capital Campaign \$ _____

Or as follows \$ _____ per _____ for a total of: \$ _____
(month/quarter/year)

To give electronically, go to hope-pc.org and click on GIVING.



7132 Portland Avenue South, Richfield, MN 55423
hope-pc.org | 612/866-4055



Embrace a Spirit of Adventure!

Strength for Today

Now it is time to embrace a new challenge (and opportunity!) – to remodel and redevelop our property for greater effectiveness in the present and as a gift to the generations that will follow us.



Hope Church is a vibrant congregation with a strong evangelical heritage dating back to 1954. For almost 65 years, our church has been ministering in the name of Jesus Christ to the needs of our community and the world. And while facilities and faces have changed over the years, one thing remains the same – our commitment to go deeper with Jesus, wider in the Kingdom, and closer in community.



Our church today is an active fellowship comprised of over 550 households (1,100 members). Led by dedicated pastors, staff, and a strong corps of lay leaders and volunteers, there is an increasing number of ways that people of all ages can participate in the spiritual, educational, social, and service ministries of our church. God has led us through many seasons of ministry, giving us a strong history of activity and accomplishment for the Lord.

We have over 110,000 square feet of outdated and well-used facilities that are stretched out across eight acres of land. The kingdom work that has been done here throughout the years is extraordinary. Yet updates and building maintenance were intentionally deferred while the Presbyterian Church (USA) asserted ownership of our property.

Bright Hope for Tomorrow

In 2014, however, we became a part of ECO: A Covenant Order of Evangelical Presbyterians. Subsequently, we completed a very successful capital campaign that covered the cost of our departure from the PC(USA). With the title to our property now in hand, we embraced this fresh start - though our facilities were, and continue to be, in need of refreshment to support our mission to be a crossover community, moved by Jesus toward one another.



Goals for the Project:

Our current sanctuary will be the cornerstone of our renewed facility. New spaces will be built adjacent to it on the four acres at the north end of our property. The new space, along with the sanctuary, will total approximately 40,000 square feet and will efficiently house all our worship, fellowship, education, office, and ministry needs.

Our remodeled facility will be user friendly, energy efficient, low maintenance, environmentally friendly, and the "right-size" for us with the space, safety, and security we need. It will be inviting, welcoming, accessible, easy to navigate, and filled with open areas with natural lighting.

- Improved visibility from Portland Avenue
- More central and welcoming entrance
- Consolidated church offices
- More easily accessible Youth + Family space
- Improved infrastructure
- Sanctuary lighting enhancements
- New multi-purpose space



Richfield is going through a period of redevelopment and revitalization. Many new businesses and housing units are being added right now. The city's popularity is increasing because of its convenient proximity to I-35, the airport, and the Mall of America. The city is upgrading its roads and sidewalks.

This explosion of interest in Richfield provides a great opportunity for us. We want to be prepared to share God's kingdom and introduce Christ to our new neighbors. We want to be an attractive and inviting church, and for our facilities to reflect what God has called Hope to be. An expression of crossover community: Deeper in Jesus, wider in the Kingdom, and closer in community.

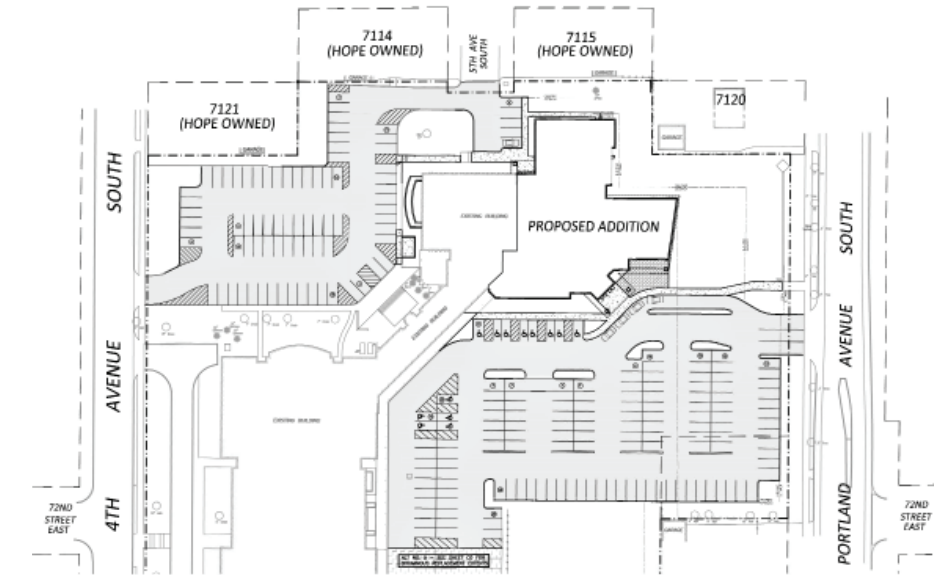


Site and Design Plans

Site plan

Features:

This illustration highlights the new church facility on the north half of our property. It is bordered by Portland Avenue to the east, the new parking lot, and Hope Center to the south, Fourth Avenue and the new Fourth Avenue Parking lot to the west, and homes to the north.

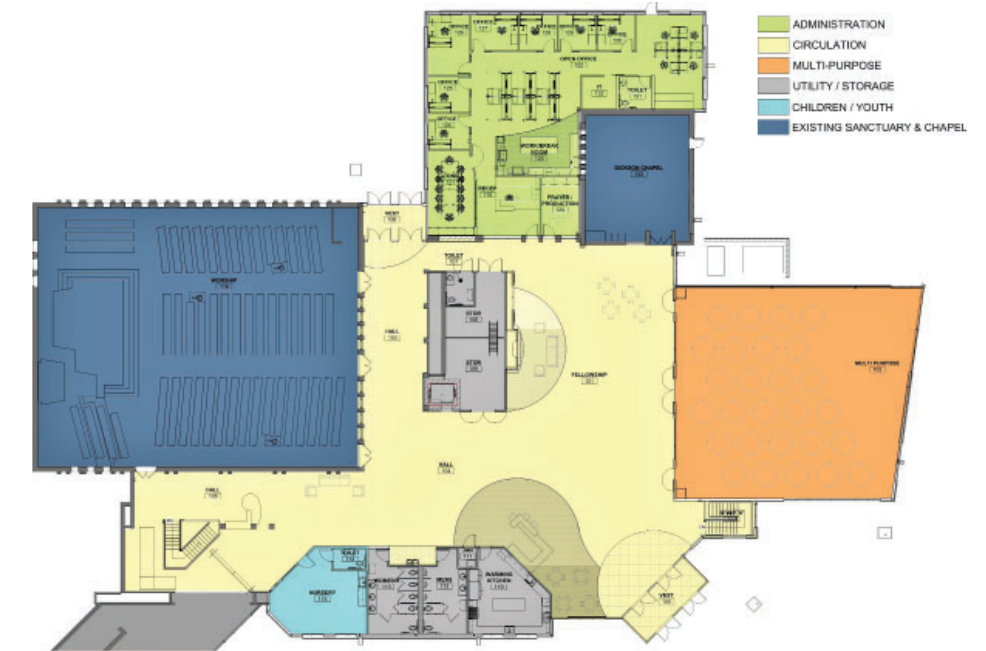


Site plan

Floorplan of the main level

Features:

The entrance at the bottom right leads from the parking lot off Portland ahead toward the coffee area, gathering space, offices, and meeting rooms. The multi-purpose room is to the right. The entry leads left past the warming kitchen, restrooms, nursery to the children's check-in area, and sanctuary.



Main level

Floorplan of the lower level

Features:

The stairway at the bottom left leads from the children's check in outside the sanctuary on the main floor into a new gathering space (The Hub). The choir room ahead has been adapted for multi-purpose use, with a smaller footprint, and a level floor. The corridor to the left leads to four shared-use preschool, school age care, children's, and youth classrooms. The two classrooms in the upper left have windows facing the Fourth Avenue parking lot. The hallway from the gathering space to the right traverses the lower level, past the elevator, youth room, and restrooms to the stairway leading to the main floor entrance.



Lower level